

	Short circuit current typ. @ 25mW/cm <sup>2</sup>	Breakdown voltage V @ 1 <sub>r</sub> 100μA	Spectral Peak (nm)	T <sub>r</sub> ,T <sub>f</sub>	Order Code
SLD-70 BG2A	55μA	50	550 <sup>(1)</sup>	4/6	121-9006
SLD-70 C2A	700μA	50	930 <sup>(2)</sup>	4/6	121-9007

<sup>(1)</sup>Low I<sub>r</sub> response,, <sup>(2)</sup> Standard photodiode response

Mfrs. List No.	Order Code	1+	25+	100+	250+
SLD-70 BG2A	121-9006	217.00	183.00	163.00	143.00
SLD-70 C2A	121-9007	124.00	104.00	92.00	83.00

Photodiode Detectors - Plastic Package



BPW34: H=4.3, W=4.7, D=2.8  
 BPW34B, BPW34FA: H=4.0, W=4.5, D=2.2  
 Lead pitch=5.1, Ident=Cathode

BPW41N (side viewing)  
 H=6.8, W=5.0, D=4.0  
 Lead pitch=2.5, Ident=Cathode



SFH206K (side viewing) H=6.8, Dia=5.0 Lead pitch=2.54 Chamfer=Cathode

SFH203P, SFH203PFA  
 5mm/T1 3/4 flat top, H=4.2  
 Lead pitch=2.54 Flat=Cathode

SFH213  
 5mm/T1 3/4 Lead pitch=2.54 Flat=Cathode



SFH203-FA, SFH213-FA  
 5mm/T1 3/4  
 Lead pitch=2.54 Flat Cathode

Sensitivity @ λ=850nm	Active Area	Half Angle	Peak Response	Response t <sub>r</sub> ,t <sub>f</sub> (μs)	Mfr.	Mfrs. List No.
0.62A/W @ 850nm	7.5mm <sup>2</sup>	60°	900nm	0.05	VISH	BPW34
75nA/lx @ 850nm	7.45mm <sup>2</sup>	60°	850nm	25	OSRAM	●BPW34-B
0.59A/W @ 850nm	7mm <sup>2</sup>	60°	950nm	0.4	OSRAM	◆BPW34-FA
0.62A/W @ 850nm	7mm <sup>2</sup>	60°	850nm	0.001	OSRAM	BPW34S
0.59A/W @ 850nm	7mm <sup>2</sup>	60°	950nm	0.002	OSRAM	◆BPW34FS
0.6A/W @ 850nm	7.5mm <sup>2</sup>	65°	940nm	0.05	VISH	◆BPW41N
0.62A/W @ 850nm	1mm <sup>2</sup>	20°	850nm	0.005	OSRAM	SFH213
0.59A/W @ 850nm	1mm <sup>2</sup>	20°	900nm	0.005	OSRAM	◆SFH213-FA
0.62A/W @ 850nm	7mm <sup>2</sup>	70°	nm	0.35	OSRAM	SFH206K
0.62A/W @ 850nm	1mm <sup>2</sup>	60°	850nm	0.002	OSRAM	SFH203P
0.59A/W @ 850nm	1mm <sup>2</sup>	60°	900nm	0.002	OSRAM	◆SFH203PFA
.59A/W @ 850nm	1mm <sup>2</sup>	20°	900nm	0.002	OSRAM	◆SFH203-FA

◆with IR filters (filters out daylight). ●Blue enhanced response-sensitivity at λ = 400nm.

Mfrs. List No.	Order Code	1+	25+	100+	250+	+
BPW34	104-5425	52.00	46.00	39.00	31.00	--
BPW34-B	121-2739	364.00	309.00	291.00	240.00	--
BPW34-FA	121-2740	62.00	54.00	51.00	42.00	--
BPW34S	121-2745	65.00	56.00	51.00	45.00	--
BPW34FS	121-2747	56.00	51.00	49.00	40.00	--
BPW41N	104-5426	53.00	47.00	40.00	32.00	--
SFH213	121-2761	46.00	40.00	34.00	28.00	--
SFH213-FA	121-2763	46.00	40.00	34.00	28.00	--
SFH206K	121-2741	80.00	68.00	64.00	53.00	--
SFH203P	121-9691	45.00	42.00	40.00	37.00	--
SFH203PFA	121-2742	71.00	60.00	57.00	47.00	--
SFH203-FA	121-2743	50.00	44.00	42.00	35.00	--

Photodiode Detectors - Sealed Metal Package

CENTRONIC



OSD1-5T (TO18): H=5.1, Dia.=4.7, Lead pitch=2.54, Tag: Anode  
 OSD5-5T, OSD15-5T (TO5): H=3.1, Dia.=8.1, Lead pitch=5.1, Tag: Anode

Silicon photodetectors for low light level and high signal to noise ratio applications.



H=5.1, Dia.=4.7  
 Lead pitch=3.0 Tag: Anode



H=3.67, Dia.=4.68

High sensitivity chip suitable for fibre applications and encoder designs

Responsivity (typ.)	Active Area	Dark Current (max.)	NEP W/Hz <sup>1/2</sup>	Cap. (V <sub>r</sub> =12V) pF (max.)	Shunt Res. MΩ (min.)	Risetime ns (Typ.)	Mfrs. List No.
0.21A/W	1mm <sup>2</sup>	1nA	2.5x10 <sup>-14</sup>	7	250	7	OSD1-5T.
0.21A/W	5mm <sup>2</sup>	2nA	3.3x10 <sup>-14</sup>	35	100	9	OSD5-5T.
0.21A/W	15mm <sup>2</sup>	5nA	5.5x10 <sup>-14</sup>	80	50	12	OSD15-5T.
0.55A/W	1mm <sup>2</sup>	5nA	3.3x10 <sup>-14</sup>	3.5	—	8	BPX65RT.
0.35A/W	0.55mm <sup>2</sup>	10nA	6.8x10 <sup>-14</sup>	8	—	1	AEPX65.

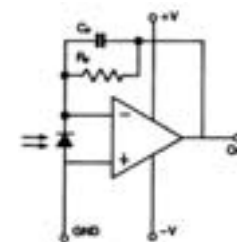
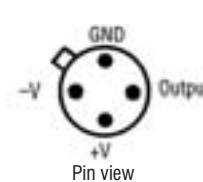
\*V<sub>f</sub> = 5V, \*\*V<sub>f</sub> = 20V

206318

Mfrs. List No.	Order Code	1+	5+	10+	25+	+
OSD1-5T.	548-716	582.00	502.00	478.00	--	--
OSD5-5T.	548-728	714.00	710.00	676.00	--	--
BPX65RT.	548-789	390.00	333.00	298.00	273.00	--
AEPX65.	548-777	1,160.00	765.00	773.00	--	--
		1+	10+	25+	50+	
OSD15-5T.	548-730	1,143.00	1,064.00	992.00	835.00	

Photodiode with Integral Amplifier

IPL



Hybrid photodetector consisting of photodiode and amplifier with feedback circuit providing an output voltage proportional to the incident light level (increasing with increasing light level). Operates from single or dual supply.

dc supply voltage	+4V to +36V or ±2V to ±18V	Peak Spectral response	900nm
Active area	1.75mm <sup>2</sup>	Frequency response (-3dB)	65kHz
Output Voltage at Peak		Half Angle	Mfrs. List No.
Lens	Responsivity	86°	IPL10530DAW
Flat	860mV/μW/cm <sup>2</sup>	27°	IPL10530DAL
Domed	860mV/μW/cm <sup>2</sup>		

206234

Mfrs. List No.	Order Code	1+	10+	25+	100+	+
IPL10530DAW	121-2466	1,889.00	1,681.00	1,541.00	--	--
IPL10530DAL	121-2459	1,420.00	1,312.00	1,251.00	1,195.00	--

Phototransistor Detectors -

Plastic Package



3mm/T1  
 BPW85B, SFH309-FA-4:  
 Lead pitch=2.54  
 Short lead: Collector

Others:  
 Lead pitch=1.3  
 Flat: Collector

5mm/T1 3/4  
 BPV11F: 3 lead,  
 pins on 2.54 PCD

Side Viewing  
 SDP8406-3  
 5.7 x 4.5 x 2.3  
 Lead pitch=2.54



Side Viewing  
 SDP8436-3  
 3.3 x 4.57 x 4.29  
 Lead pitch=2.54



1.8mm/T1 3/4  
 BPW17N  
 L=2.9, Lead  
 pitch=2.54  
 Flat: Collector

Sensitivity (mA)/(mW/cm <sup>2</sup> ) min	Half Angle	Peak Response	Response t <sub>r</sub> , t <sub>f</sub> (μs)	Mfr.	Mfrs. List No.
5mm/T1 3/4					
3.0-10.0 @ 1mW/cm <sup>2</sup>	15°	950nm	3.8	VISH	BPV11
9.0 (typ) @ 1mW/cm <sup>2</sup>	30°	900nm	3.3	VISH	◆ BPV11F
3mm/T1					
1.0-2.0 @ 0.5mW/cm <sup>2</sup>	32°	900nm	10	OSRAM	◆ SFH309FA-4
1.5-4.0 @ 1mW/cm <sup>2</sup>	50°	830nm	1.5	VISH	BPW85
3.0-8.0 @ 1mW/cm <sup>2</sup>	25°	950nm	1.5	VISH	BPW85C
0.8-3.2 @ 1mW/cm <sup>2</sup>	30°	950nm	1.5	VISH	TEFT4300
4.0 (min) @ 20mW/cm <sup>2</sup>	16°	840nm	5	OPTEK	OP505D
12.0-24.0 @ 5mW/cm <sup>2</sup>	40°	880nm	12	HWL	SDP84053
1.8mm/T1 3/4					
0.5-1.0 @ 1mW/cm <sup>2</sup>	12°	950nm	3.7	VISH	BPW17N

Optoelectronics, Indicators, Lamps & Displays

14

Compliant Non-compliant + Limited stock - RoHS replacement available

RoHS